

DYX-301 悬臂梁式称重传感器 Cantilever beam load cell



产品综述 Product Reviews

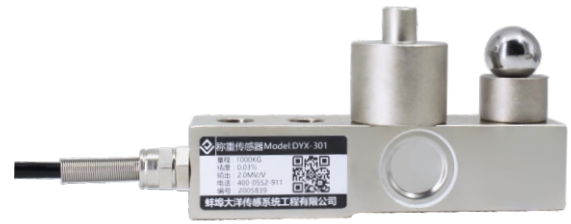
特性:
结构紧凑, 综合精度高, 长期稳定性好, 优质合金钢表面镀镍。

应用领域:
大力值试验机、料斗秤、吊钩秤、包装秤、皮带秤、插拔力测试仪等拉力测试仪器以及自动化设备领域和测试领域

Characteristic:
Compact structure, high comprehensive precision, good long-term stability, high quality alloy steel surface nickel plating.

Application fields:
The field of tension and pressure testing instruments such as heavy duty testing machine, hopper scale, hook scale, packaging scale, belt scale, plug-in force tester, automation equipment and testing field.

附件 enclosure



组合压头 Combined indenter



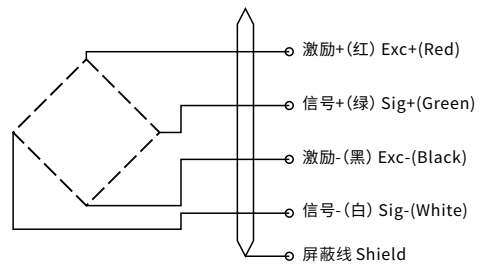
支脚 Foot

压点 Pressure point

传感器受力图 Force diagram of sensor



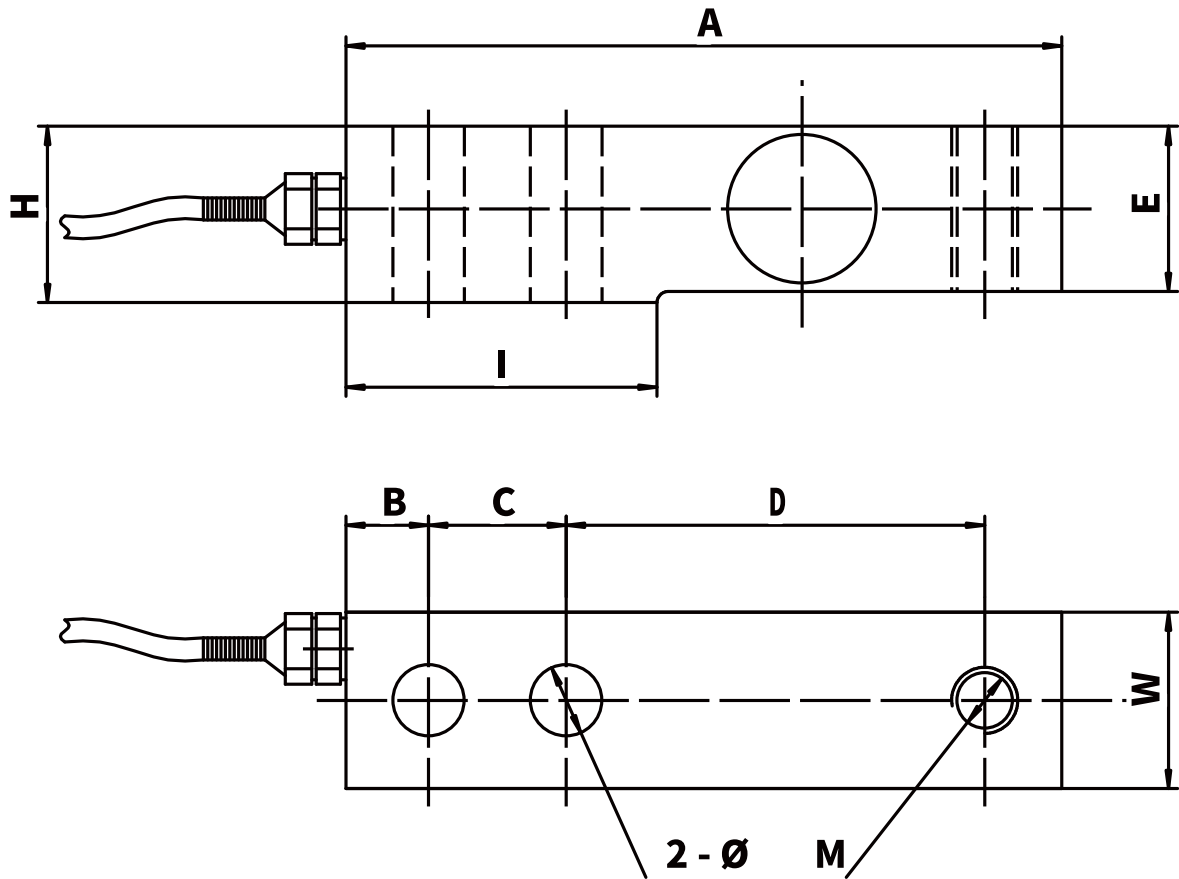
传感器接线示意图 Sensor wiring diagram



参数表 Parameters Table

量程 Capacity	0-10T	材质 Material	合金钢/不锈钢
输出灵敏度 Rated Output	2.0±0.05mV/V	阻抗 Impedance	350Ω
零点输出 Zero Balance	±1%F.S.	绝缘电阻 Insulation	≥5000MΩ/100VDC
非线性 Non-Linearity	0.03%F.S.	使用电压 Operating Temp Range	5-15v
滞后 Hysteresis	0.03%F.S.	工作温度范围 Operating Temp Range	-20-80°C
重复性 Repeatability	0.03%F.S.	安全过载 Safe Overload	150%
蠕变(30分钟) Creep(30min)	0.03%F.S.	极限过载 Maximum Overload	200%
温度灵敏度漂移 Temp Effect on Output	0.03%F.S./10°C	电缆线规格 Cable Specifications	φ5x3m
零点温度漂移 Temp Effect on Zero	0.05%F.S./10°C	线缆极限拉力 Cable ultimate pull	10kg
响应频率 Response frequency	10kHz	TEDS可选	

DYX-301尺寸

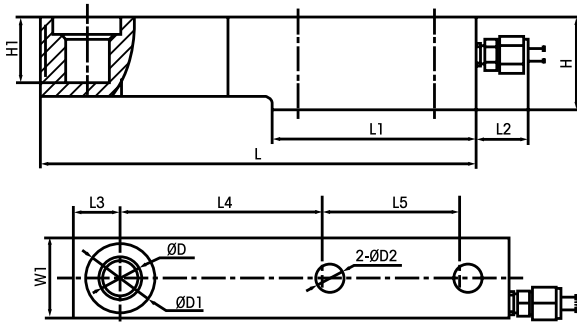


量程	A	B	C	D	E	W	H	D)\$	@
50kg-2t	130	15	25	76	30	32	32	D () ² (%)	(*	, -
2.5-5t	171	19	38	96	38	38	43	D (/ ² (%))'	/'
6-10t	225.6	25.4	50.8	122.9	50.8	50.8	56	M24×2	Φ26.4	105

DYX-302 悬臂梁式称重传感器 Cantilever beam load cell



外形尺寸 External Dimension



量程(kg)	L	L1	L2	L3	L4	L5	W1	H	H1	ØD	ØD1	ØD2
0.5-2T	203	95	26	22	98	64	36.5	43	30.4	16	32	13
3T	203	95	26	22	98	64	36.5	43	30.4	16	32	15
5T	235	110	26	22	124	66	47.5	52	30	22	38	20

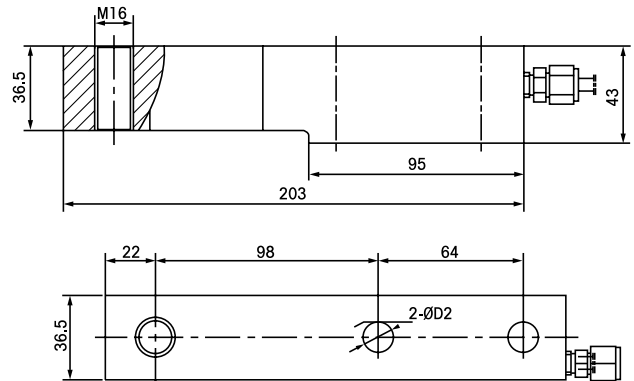
参数表 Parameters Table

量程 Capacity	0-5T
输出灵敏度 Rated Output	2.0±0.02mV/V
零点输出 Zero Balance	±1%F.S.
非线性 Non-Linearity	0.03%F.S.
滞后 Hysteresis	0.03%F.S.
重复性 Repeatability	0.02%F.S.
蠕变(30分钟) Creep(30min)	0.02%F.S.
温度灵敏度漂移 Temp Effect on Output	0.03%F.S./10°C
零点温度漂移 Temp Effect on Zero	0.03%F.S./10°C
响应频率 Response frequency	10kHz
材质 Material	合金钢/不锈钢
阻抗 Impedance	350Ω
绝缘电阻 Insulation	≥5000MΩ/100VDC
使用电压 Operating Temp Range	5-10v
工作温度范围 Operating Temp Range	-20-80°C
安全过载 Safe Overload	150%
极限过载 Maximum Overload	300%
电缆线规格 Cable Specifications	φ5x5m
线缆极限拉力 Cable ultimate pull	10kg
TEDS	可选

DYSBS 悬臂梁式称重传感器 Cantilever beam load cell



外形尺寸 External Dimension



容量	D2
0.3-2T	13
3T	15

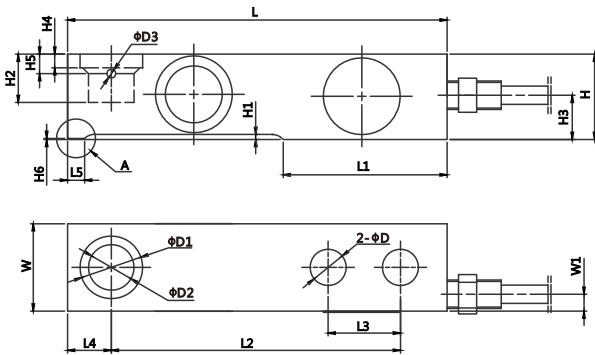
参数表 Parameters Table

量程 Capacity	0-3T
输出灵敏度 Rated Output	2.0±0.02mV/V
零点输出 Zero Balance	±1%F.S.
非线性 Non-Linearity	0.03%F.S.
滞后 Hysteresis	0.03%F.S.
重复性 Repeatability	0.02%F.S.
蠕变(30分钟) Creep(30min)	0.02%F.S.
温度灵敏度漂移 Temp Effect on Output	0.03%F.S./10°C
零点温度漂移 Temp Effect on Zero	0.03%F.S./10°C
响应频率 Response frequency	10kHz
材质 Material	不锈钢/合金钢
阻抗 Impedance	350Ω
绝缘电阻 Insulation	≥5000MΩ/100VDC
使用电压 Operating Temp Range	5-15v
工作温度范围 Operating Temp Range	-20-80°C
安全过载 Safe Overload	150%
极限过载 Maximum Overload	200%
电缆线规格 Cable Specifications	φ5x3m
线缆极限拉力 Cable ultimate pull	10kg
TEDS	可选

DYHLJ 悬臂梁式称重传感器
Cantilever beam load cell



外形尺寸 External Dimension

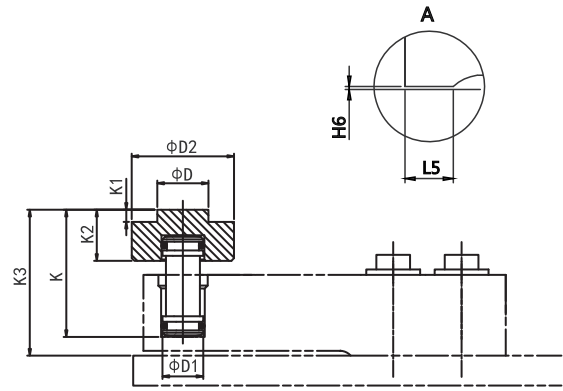


量程(T)	D	D1	D2	D3	H	H1	H2	H3	H4	H5
0.25/0.5/1	12.7	22	15.9	3.1	30	1.9	17	15.9	4.7	7.7
2	12.7	22	15.9	3.1	36.6	2.8	23	19.6	9.5	11.7
3	15	22	15.9	-	36.6	1.2	23	19.6	9.5	11.7
5	19	34.9	22.2	3.1	43	2	29.4	22.5	11	11.7

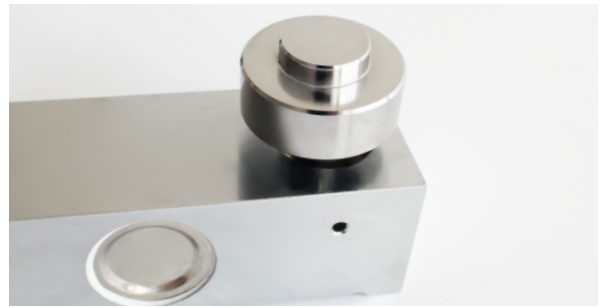
量程(T)	H6	L	L1	L2	L3	L4	L5	W	W1
0.25/0.5/1	0.38	133.4	57.6	101.6	25.4	15.4	6.4	30.7	5.2
2	0.82	136.7	57.9	101.6	25.4	18.4	6.4	36.8	6
3	-	139.7	57.9	104.6	25.4	18.4	-	39	6
5	-	171.5	73.8	133.3	38.1	21.5	-	42.9	6

参数表 Parameters Table

量程 Capacity	0-5T
输出灵敏度 Rated Output	2.0±0.05mV/V
零点输出 Zero Balance	±1%F.S.
非线性 Non-Linearity	0.03%F.S.
滞后 Hysteresis	0.03%F.S.
重复性 Repeatability	0.02%F.S.
蠕变(30分钟) Creep(30min)	0.03%F.S.
温度灵敏度漂移 Temp Effect on Output	0.03%F.S./10°C
零点温度漂移 Temp Effect on Zero	0.05%F.S./10°C
响应频率 Response frequency	10kHz
材质 Material	合金钢/不锈钢
阻抗 Impedance	350Ω
绝缘电阻 Insulation	≥5000MΩ/100VDC
使用电压 Operating Temp Range	5-15v
工作温度范围 Operating Temp Range	-20-80°C
安全过载 Safe Overload	150%
极限过载 Maximum Overload	200%
电缆线规格 Cable Specifications	φ5x3m
线缆极限拉力 Cable ultimate pull	10kg
TEDS	可选



量程(T)	K	K1	K2	K3	D	D1	D2
0.25-3	47.8	4.2	19.0	61	19.0	15.2	38.0
5	114.4	6.0	20.5	128.0	34.7	21.5	44.5



传感器受力图 Force diagram of sensor



应用领域 Application



1. 反应釜配料罐
2. 输送带称重装置

1. Reactor
2. Belt weighing



1. 配料仓
1. Batching bin