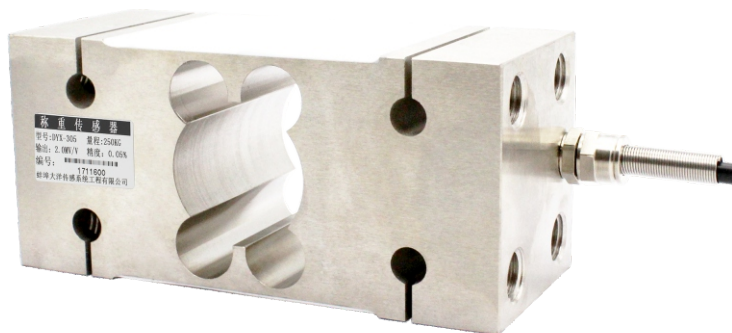


DYX-305 悬臂梁式称重传感器 Cantilever beam load cell



产品综述 Product Reviews

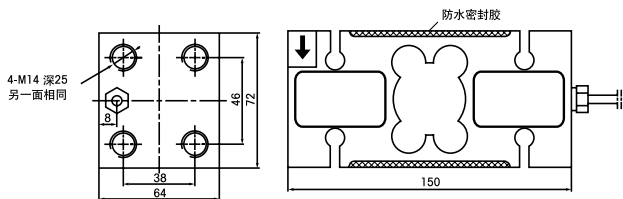
特性:
结构紧凑, 综合精度高, 长期稳定性好, 优质合金钢表面镀镍。

应用领域:
大力值试验机、料斗秤、吊钩秤、包装秤、皮带秤、插拔力测试仪等拉力测试仪器以及自动化设备领域和测试领域

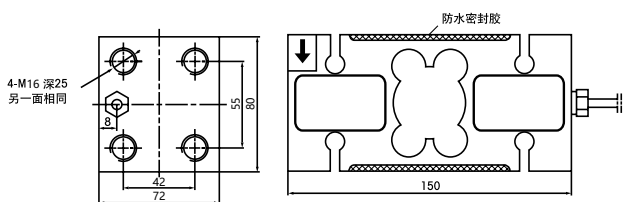
Characteristic:
Compact structure, high comprehensive precision, good long-term stability, high quality alloy steel surface nickel plating.

Application fields:
The field of tension and pressure testing instruments such as heavy duty testing machine, hopper scale, hook scale, packaging scale, belt scale, plug-in force tester, automation equipment and testing field.

外形尺寸 External Dimension

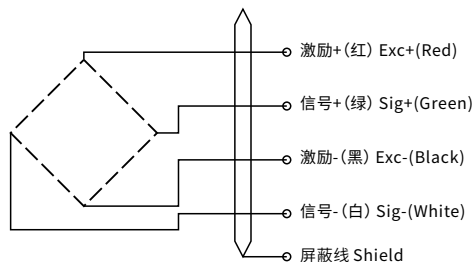


量程(kg) 150 250 500 1000

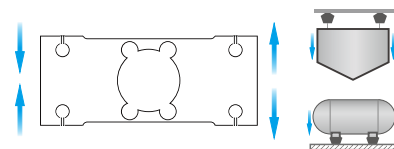


量程(kg) 2000

传感器接线示意图 Sensor wiring diagram



传感器受力图 Force diagram of sensor



参数表 Parameters Table

量程 Capacity	0-2000kg	材质 Material	合金钢
输出灵敏度 Rated Output	2.0±0.02mV/V	阻抗 Impedance	350Ω
零点输出 Zero Balance	±1%F.S.	绝缘电阻 Insulation	≥5000MΩ/100VDC
非线性 Non-Linearity	0.03%F.S.	使用电压 Operating Temp Range	5-15v
滞后 Hysteresis	0.03%F.S.	工作温度范围 Operating Temp Range	-20-60°C
重复性 Repeatability	0.03%F.S.	安全过载 Safe Overload	150%
蠕变(30分钟) Creep(30min)	0.03%F.S.	极限过载 Maximum Overload	200%
温度灵敏度漂移 Temp Effect on Output	0.03%F.S./10°C	电缆线规格 Cable Specifications	φ5x3m
零点温度漂移 Temp Effect on Zero	0.05%F.S./10°C	线缆极限拉力 Cable ultimate pull	10kg
响应频率 Response frequency	10kHz	TEDS可选	