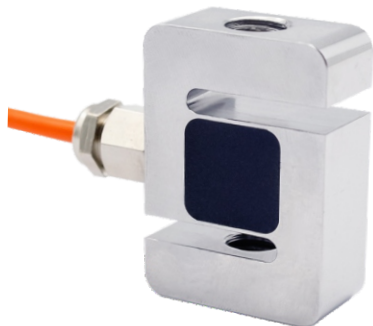
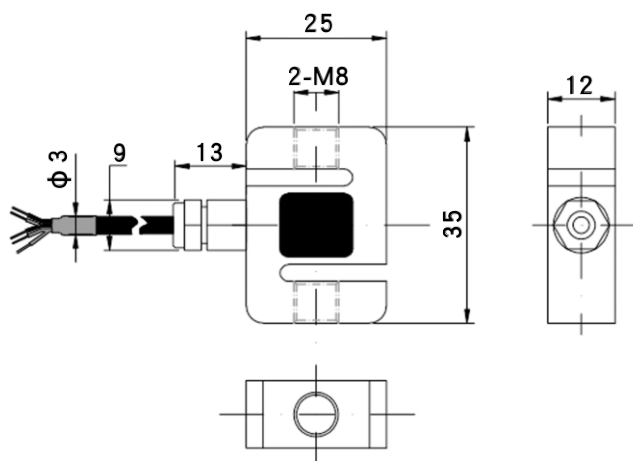


DYLY-107 S型拉压力传感器 S-type tension pressure sensor



外形尺寸 External Dimension

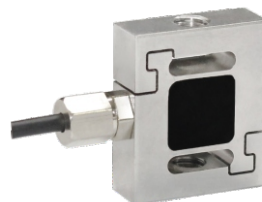


量程(kg) 5 10 20 30 50 100 200

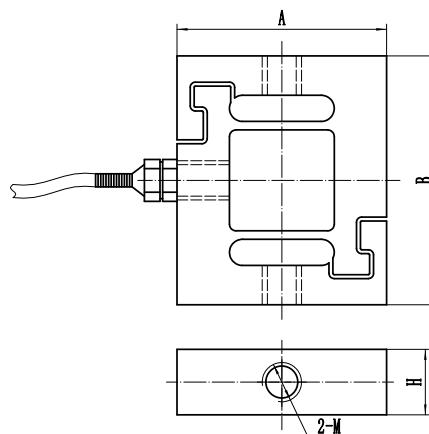
参数表 Parameters Table

量程 Capacity	0-200kg
输出灵敏度 Rated Output	1.0-2.0mV/V
零点输出 Zero Balance	±2%F.S.
非线性 Non-Linearity	0.05%F.S.
滞后 Hysteresis	0.03%F.S.
重复性 Repeatability	0.03%F.S.
蠕变(30分钟) Creep(30min)	0.03%F.S.
温度灵敏度漂移 Temp Effect on Output	0.03%F.S./10°C
零点温度漂移 Temp Effect on Zero	0.05%F.S./10°C
响应频率 Response frequency	10kHz
材质 Material	不锈钢
阻抗 Impedance	350Ω
绝缘电阻 Insulation	≥5000MΩ/100VDC
使用电压 Operating Temp Range	5-10v
工作温度范围 Operating Temp Range	-20-80°C
安全过载 Safe Overload	150%
极限过载 Maximum Overload	200%
电缆线规格 Cable Specifications	φ3x2m
线缆极限拉力 Cable ultimate pull	10kg
TEDS可选	

DYLY-108 S型拉压力传感器 S-type tension pressure sensor



外形尺寸 External Dimension

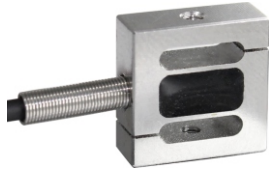


量程(kg)	M	H	A	B
0.5-10	M3	5	16	19.1
20-50	M4	6	16	19.1
100-200	M8	14	26	40

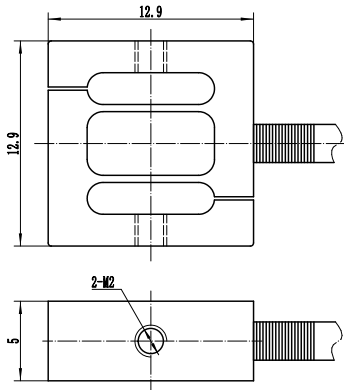
参数表 Parameters Table

量程 Capacity	0-200kg
输出灵敏度 Rated Output	1.0-2.0mV/V
零点输出 Zero Balance	±2%F.S.
非线性 Non-Linearity	0.1%F.S.
滞后 Hysteresis	0.05%F.S.
重复性 Repeatability	0.05%F.S.
蠕变(30分钟) Creep(30min)	0.05%F.S.
温度灵敏度漂移 Temp Effect on Output	0.05%F.S./10°C
零点温度漂移 Temp Effect on Zero	0.05%F.S./10°C
响应频率 Response frequency	10kHz
材质 Material	不锈钢
阻抗 Impedance	350Ω
绝缘电阻 Insulation	≥5000MΩ/100VDC
使用电压 Operating Temp Range	5-10v
工作温度范围 Operating Temp Range	-20-80°C
安全过载 Safe Overload	150%
极限过载 Maximum Overload	200%
电缆线规格 Cable Specifications	<100kg: φ2x1m >100kg: φ3x2m
线缆极限拉力 Cable ultimate pull	10kg
TEDS可选	

DYLY-109 S型拉力传感器
S-type tension pressure sensor



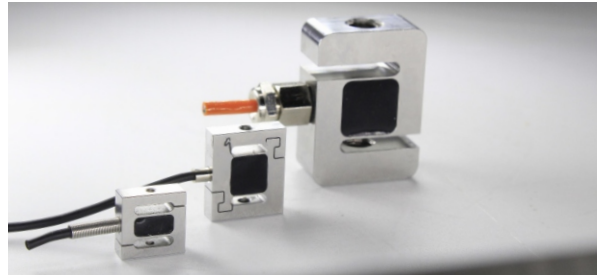
外形尺寸 External Dimension



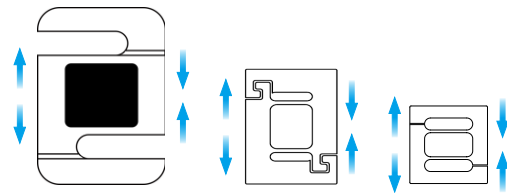
量程(kg) 0.5 1 2 5 10

参数表 Parameters Table

量程 Capacity	0-10kg
输出灵敏度 Rated Output	1.0-2.0mV/V
零点输出 Zero Balance	±2%F.S.
非线性 Non-Linearity	0.10%F.S.
滞后 Hysteresis	0.05%F.S.
重复性 Repeatability	0.05%F.S.
蠕变(30分钟) Creep(30min)	0.05%F.S.
温度灵敏度漂移 Temp Effect on Output	0.05%F.S./10°C
零点温度漂移 Temp Effect on Zero	0.05%F.S./10°C
响应频率 Response frequency	10kHz
材质 Material	不锈钢
阻抗 Impedance	350Ω
绝缘电阻 Insulation	≥5000MΩ/100VDC
使用电压 Operating Temp Range	5-10v
工作温度范围 Operating Temp Range	-20-80°C
安全过载 Safe Overload	150%
极限过载 Maximum Overload	200%
电缆线规格 Cable Specifications	φ2x2m
线缆极限拉力 Cable ultimate pull	10kg
TEDS可选	



传感器受力图 Force diagram of sensor



应用领域 Application



- 1. 3C数码检测
- 2. 助力装置
- 1. 3C digital detection
- 2. Booster device



- 1. 机械臂机械手
- 1. Manipulator