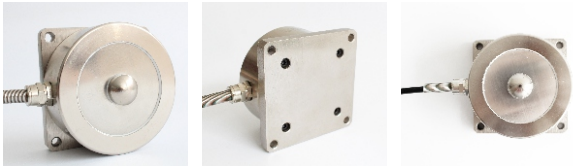
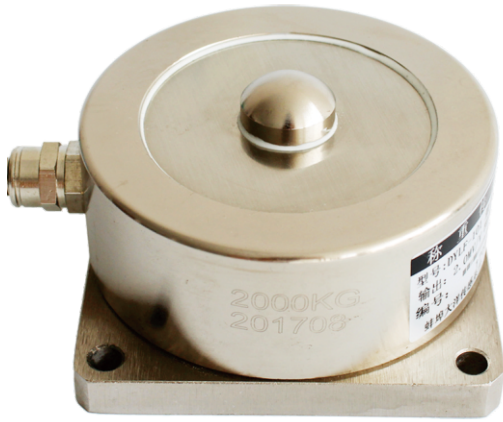


DYLF-101 轮辐式压力传感器
Spoke pressure sensor



产品综述 Product Reviews

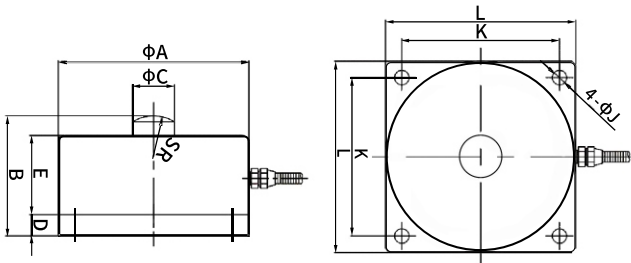
特性:
膜盒结构、结构紧凑、综合精度高、长期稳定性好、优质合金钢表面镀镍。

应用领域:
万能材料试验机、料斗秤、吊钩秤、包装秤、皮带秤、插拔力测试仪等拉压力测试仪器以及自动化设

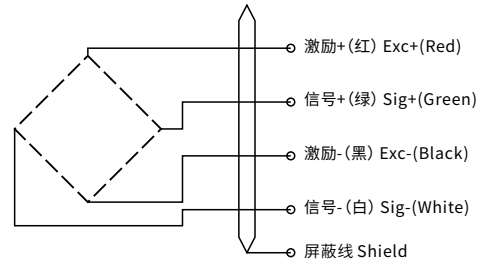
Characteristic:
It has the advantages of bi-directional tension and compression, compact structure, high comprehensive precision, good long-term stability and nickel plating on the surface of high-quality alloy steel.

Application fields:
Universal material testing machine, hopper scale, hook scale, packaging scale, belt scale, plug-in force tester and other tension and pressure testing instruments as well as automation equipment and testing beld.

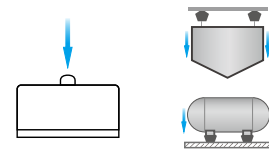
外形尺寸 External Dimension



传感器接线示意图 Sensor wiring diagram



传感器受力图 Force diagram of sensor



量程	φA	B	φC	D	E	K	L	SR	4-φJ
0.2-0.7t	72	41	16	8	25	62	72	13	4.6
1-8t	88	53	20	10	34	75	88	20	5.6
10-15t	114	70	25	13	46	95	114	25	6.5
20-50t	145	91	32	16	60	120	145	30	11

参数表 Parameters Table

量程 Capacity	0-50T	材质 Material	合金钢
输出灵敏度 Rated Output	2.0±0.05mV/V	阻抗 Impedance	700/1400Ω
零点输出 Zero Balance	±1%F.S.	绝缘电阻 Insulation	≥5000MΩ/100VDC
非线性 Non-Linearity	0.05%F.S.	使用电压 Operating Temp Range	5-15v
滞后 Hysteresis	0.05%F.S.	工作温度范围 Operating Temp Range	-20-80°C
重复性 Repeatability	0.03%F.S.	安全过载 Safe Overload	150%
蠕变(30分钟) Creep(30min)	0.03%F.S.	极限过载 Maximum Overload	200%
温度灵敏度漂移 Temp Effect on Output	0.03%F.S./10°C	电缆线规格 Cable Specifications	φ5x3m / 5m
零点温度漂移 Temp Effect on Zero	0.03%F.S./10°C	线缆极限拉力 Cable ultimate pull	10kg
响应频率 Response frequency	10kHz	TEDS可选	